

Arizona Floodplain Management Association

Spring 2016 Conference



Quick Look: Conference Abstract

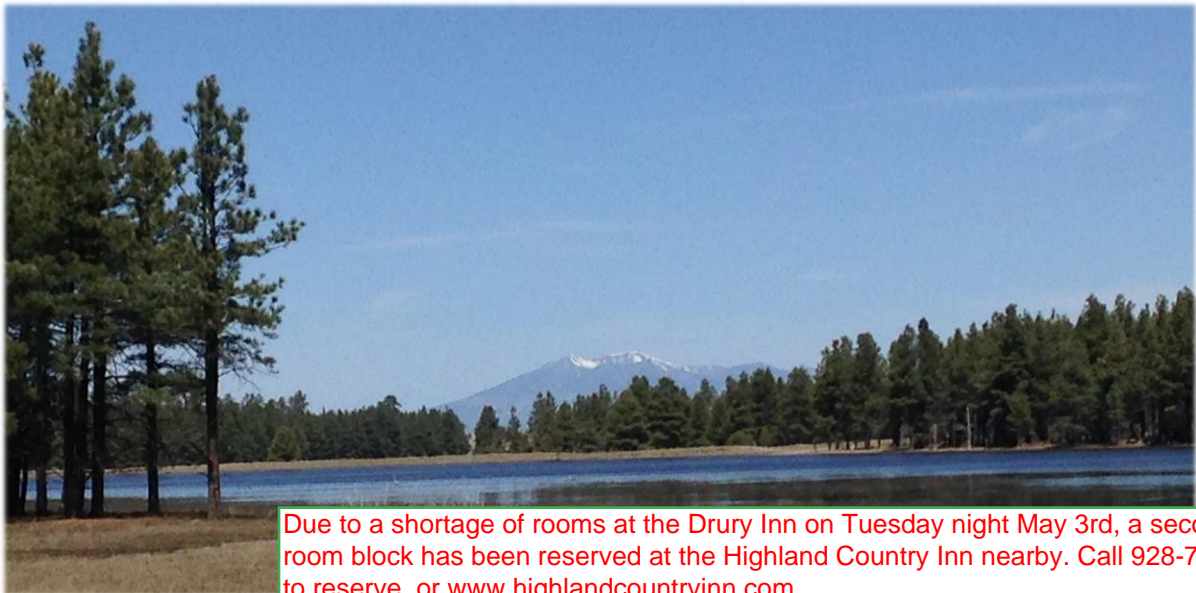
- ❖ Go to www.azfma.org to register
- ❖ You must be an AFMA member to register for the conference or classes
- ❖ Free Wednesday Training Classes
- ❖ Plenary, Technical, and Programs & Policies presentations
- ❖ Field tour of the Schultz Fire area
- ❖ CFM/Continuing Education Credits

May 4 – 6, 2016
Flagstaff, Arizona

High Country Conference Center

Conference Cost: \$350, Includes Thursday Dinner (Additional Dinner Guests: \$25)

201 West Butler Avenue Flagstaff, Arizona, 86001



Due to a shortage of rooms at the Drury Inn on Tuesday night May 3rd, a second hotel room block has been reserved at the Highland Country Inn nearby. Call 928-774-5041 to reserve, or www.highlandcountryinn.com

Note: Room rate of \$112 (plus taxes and fees) available at the nearby Drury Hotel.

Reserve your room by calling the Drury Hotel at 1-800-325-0720 and refer to the group number 2257207.

Identify yourself as part of the *Arizona Floodplain Management Association Conference*

Cutoff for guest room registration to receive the rate is April 3, 2016.

Attention CFMs! Conference has been pre-approved for CECs by ASFPM (Thursday conference 6 CECs, Friday conference 2.5 CECs) Workshop and field trip CECs – see descriptions for pre-approved CECs

Arizona Floodplain Management Association Spring 2016 Conference

Wednesday, May 4th Training Classes – Schedule of Events (See Descriptions of Classes for more information)

8:00 AM	A Natural Systems Approach – Utilizing Low Impact Development and Green Infrastructure			
8:30 AM				
9:00 AM		Recent & Upcoming NFIP Changes	Office Hours with FEMA & ADWR: Mapping (By Advance Appointment Only See Below to Sign Up)	Office Hours with FEMA & ADWR NFIP Compliance and CAV Issues (By Advance Appointment Only)
9:30 AM				
10:00 AM		Permitting Manufactured Homes in Floodplains		
10:30 AM				
11:00 AM				
11:30 AM				
Noon	Lunch –Provided by AFMA			
12:30 PM				
1:00 PM			Office Hours with FEMA & ADWR: Mapping (By Advance Appointment Only See Below to Sign Up)	Office Hours with FEMA & ADWR NFIP Compliance and CAV Issues (By Advance Appointment Only)
1:30 PM	Introduction and Application of Basic Scour Analysis	Community Rating System (CRS) – Activity 330 and the Program for Public Information (PPI)		
2:00 PM				
2:30 PM				
3:00 PM				
3:30 PM				
4:00 PM				
4:30 PM				
5:00 PM				
5:30 PM	Evening Reception and Registration on the 1899 Patio (Appetizers and Cash Bar, Dinner on your own)			
6:00 PM				
6:30 PM				
7:30 PM				
1:00 to 4:00 PM, CFM Exam (Located in the Drury Hotel, McMillan Room)				

Description of Classes – Wednesday, May 4th

A Natural Systems Approach – Utilizing Low Impact Development and Green Infrastructure

(8:00 am to noon, 4 CECs) David McKee, CFM, CPESC, City of Flagstaff, Kieran Sikdar, CFM, MS, Watershed Management Group, Chris Lloyd, CIC, CLIA, Morning Dew Landscaping

Part One: Our class will focus on a case study of an actual project that we will review and visit (two blocks from meeting space).

1. Why did we select this particular project site?
2. Design scope, criteria and obstacles
3. Review of the design - what does it accomplish?
4. Construction
5. Site visit

Part Two: We have identified another potential project. As 4-5 person teams we will apply this natural systems approach and share our ideas with the class.

1. New site – what is our scope?
2. What principles of LIDs might work and why?
3. Crash course in site design (each team)
4. Present to the class
5. Open discussion between teams related to the project along with review by presenters.

Part Three:

Conclusion discussion regarding what challenges we face to implement LID and Green Infrastructure and how to overcome those obstacles.



Arizona Floodplain Management Association

Spring 2016 Conference

Description of Classes – Wednesday, May 4th

Recent & Upcoming NFIP Changes

(9:00 am to 10:00 am, 1 CEC) Bruce Bender, CFM, Bender Consulting Services, Inc.

Since the passage of the 2012 and 2014 reform legislation, FEMA has been attempting to interpret and implement changes directed by Congress. It has been a roller-coaster ride with increasing and decreasing rates, refunds, and repeals. How pre-FIRM buildings, lapsed coverages, and those affected by map changes are treated has changed. Keeping up with all of these is challenging for both the local official and property owner.

While this workshop will provide a quick review of where we have been, it will focus more on where we are today and look at recent and upcoming changes (e.g. April 2016). It will be presented through the lens of the local official to help them understand these changes and what to be prepared for, including questions from their residents and business owners.

Permitting Manufactured Homes in Floodplains

(10:00 am to noon, 2 CECs) Suzie Bohnet, P.E., CFM, Arizona Department of Water Resources

Permitting manufactured homes in floodplains presents many challenges for the local jurisdiction, from ensuring the permit for installation is reviewed by the floodplain personnel; clarifying which government entity reviews, issues permits and inspects the proposed installation; the relatively-new HUD foundation requirements for manufactured homes in floodplains; working with the State Office of Manufactured Housing (OMH) to clarify their level of responsibility for review and approval; and how to better ensure submittal of as-built certification (i.e., Elevation Certificate) to the community.

ADWR worked with OMH and local communities to better understand each entity's role in the permitting/inspection/certification process to develop Standard Operating Procedures for greater compliance with the NFIP requirements. Fortunately, most of the communities followed similar-enough steps that made the final outline for the draft SOPs relatively easy to formulate with allowance for the special steps taken by those that have an Intergovernmental Agreement with OMH.

This presentation will discuss coordination efforts, and the need for ongoing training with manufactured home installers and communities.

Community Rating System – Activity 330 and the Program for Public Information

(1:30 pm – 3:30 pm, 2 CECs) Dave Arkens, CFM, Insurance Services Office, Inc.

This workshop will cover the importance for CRS communities to have a strong outreach program. It will include an overview of Activity 330 and why outreach projects are such a key element for CRS communities with an emphasis on developing a Program for Public Information.

Introduction and Application of Basic Scour Analysis

(1:30 pm – 3:30 pm, 2 CECs) Brinton Swift, P.E., CFM, Jacob Hyles P.E., Dan Pfeifer, P.E., HDR Engineering

This erosion and scour analysis class will be presented by 3 engineers with a national and local background in sediment transport and erosion analysis. The focus of the class will be on the basic forms of channelized scour and approximation, in 4 major components:

1. Introduction to channelized flow scour and mechanisms
2. General evaluation of scour potential and scour depths for project design
3. Application of scour evaluation concepts on local projects
4. Participant exercise for bridge scour problem

Participants will come away with a basic understanding of the mechanisms that cause scour and some general places to look to find analysis methods for evaluation. Participants will also have a basic understanding of application of these analytical methods using the local Maricopa County Drainage Design Manual. Attendees will have a chance to dive into these methods with a practical problem.



Arizona Floodplain Management Association Spring 2016 Conference

Description of Classes – Wednesday, May 4th

CFM Exam (1:00 pm to 4:00 pm, must pre-register with ASFPM) Located in the Drury Hotel McMillan Room
The ASFPM Certified Floodplain Manager (CFM) exam will be proctored. To take the exam, you must pre-register through ASFPM; see <http://www.floods.org/pdf/certapp.pdf> for more information.

Office Hours with FEMA and ADWR: Mapping (9:00 am to 5:00 pm, advance appointment only)
Schedule a time to meet with Bob Bezek from FEMA Region IX and Maureen Towne from ADWR to discuss Risk MAP, current or future engineering studies, levees, or other mapping issues in your community. Contact Maureen Towne at ADWR to schedule an appointment. mctowne@azwater.gov or 602-771-8662

Office Hours with FEMA and ADWR: NFIP Compliance and CAV Issues (9:00 am to 5:00 pm, advance appointment only) Schedule a time to meet with Patricia Rippe from FEMA Region IX, Brian Cosson and Suzie Bohnet from ADWR to discuss NFIP compliance and CAV issues in your community. Contact Suzie Bohnet at ADWR to schedule an appointment. slbohnet@azwater.gov or 602-771-8459

Evening Reception and Registration (5:30 pm to 7:30 pm) On the 1899 Patio
Come register for the conference and join your fellow floodplain managers for an evening reception on the 1899 patio. Appetizers will be served and a cash bar will be available.

Wednesday Dinner – On your own.



-Photograph courtesy of Chris Dusza



Thursday, May 5th

Arizona Floodplain Management Association

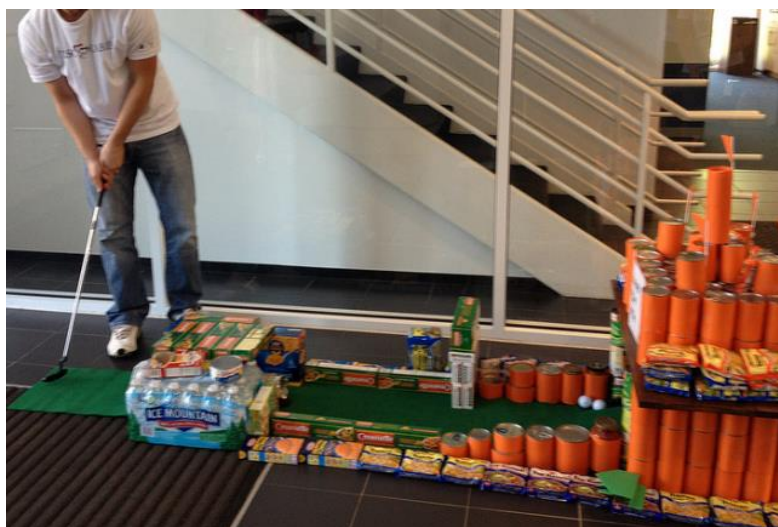
Spring 2016 Conference

Plenary Session	7:00 to 8:00	Breakfast at the High County Conference Center		
	8:00 to 8:05	Call to Order and Announcements		
	8:05 to 8:30	Local Welcome – Schultz Fire Flooding and Cleanup Supervisor Liz Archuleta, Coconino County, Board of Supervisors		
	8:30 to 9:00	2014 Deep Seated Landslide of Western Washington: River Response & Flood Risk Christopher Magirl, PhD, US Geological Survey		
	9:00 to 9:30	U.S. Army Corps of Engineers – Past, Present and Future in AZ Kim Gavigan, P.E., CFM, US Army Corps of Engineers		
	9:30 to 10:00	The Aggregate Mining Industry and Floodplains Steve Trussell, Arizona Rock Products Association		
	10:00 to 10:30	Break		
	10:30 to 11:15	July 2012 Flood Damage to Anthem Patrick Wolf, P.E., CFM, Raj Shah, P.E., Ritoch-Powell & Associates		
	11:15 to Noon	AFMA Financial Overview and Business Meeting, CFM Pins		
Noon to 1:30 Lunch - Provided by AFMA				
Afternoon Concurrent Sessions	1:30 to 2:00	Technical Track	AAA Industrial Park Drainage Improvements, Dennis L. Richards, P.E., D.WRE, Premier Engineering Corporation	
	2:00 to 2:30		CAP Canal Centennial Wash Flood Impoundment Dike Improvements, Jim Geisbush, P.E., PMP, Central Arizona Project, Rob Lyons, P.E., CFM, JE Fuller Hydro & Geo	
	2:30 to 3:00		Promoting Low Impact Development in Pima County Through Site Planning and Watershed Management, Ann Moynihan, P.E., CFM, Evan Canfield, P.E., CFM, PhD, Pima County Regional Flood Control District	
	3:00 to 3:30		Break	
	3:30 to 4:00		Coffee Pot Basin Drainage Improvement Project J. Andy Dickey, P.E., CFM, City of Sedona, Rob Lyons, P.E., CFM, JE Fuller Hydrology & Geomorphology, G. Krishan Ginige, P.E., CFM, Southwestern Environmental Consultants, Inc.	
	4:00 to 4:30		Channeling at a Burial Ground - Drainage Master Plan for the National Memorial Cemetery of Arizona, Dan Pfeifer, P.E., Janelle Moyer, P.E., CFM HDR Engineering	
	4:30 to 5:00		Using FLO-2D To Perform No Adverse Impact Analysis on Schultz EWP Improvements, Scott Ogden, P.E., CFM, JE Fuller Hydrology & Geomorphology	
	1:30 to 2:00	Programs and Policies Track	Floodplain Management Planning by Committee, Laurie T. Miller, P.E., LTM Engineering, Inc., Mark Frago, CFM, AICP, Flood Control District of Maricopa County	
	2:00 to 2:30		Flood Insurance from an Insurance Agent's Perspective Eric J. Pfister, Eric J Pfister Insurance Agency Inc	
	2:30 to 3:00		Community Rating System (CRS) – 2017 CRS Coordinator’s Manual – Coming Soon Dave Arkens, CFM, Insurance Services Office, Inc (ISO)	
	3:00 to 3:30		Break	
	3:30 to 4:00		Hazard Mitigation Assistance Grants in Arizona Duke Jones, Arizona Department of Emergency and Military Affairs	
	4:00 to 4:30		Communicating Map Changes Bruce Bender, CFM, FloodSmart	
	4:30 to 5:00		Managing Urban Runoff to Protect Arizona’s Surface Waters Amanda Richardson, CMS4S, City of Flagstaff	
5:30 to 9:00		Dinner and Activities at the High Country Conference Center Humphreys Ballroom Reception beginning at 5:30, no host bar, Scholarship Fund Drive (silent auction and raffle) followed by dinner and games!		



“Can”struction for a Cause – Mini-golf event at AFMA Spring 2016 in Flagstaff

Thursday night, May 5th, two activities in one! Assemble your team and build a mini-golf hole using only canned food. Each team will receive a pre-determined amount of canned food and bottled water (supplied by AFMA) and will be given 30 minutes to construct a miniature golf hole. After construction, everyone is invited to form a foursome and play mini golf. All food will be donated to the Flagstaff Family Food Center and/or St. Mary's Food Bank Alliance.



The players will vote on prizes to the “can”struction teams for the following:

- Most creative
- Best visual presentation
- Most fun to play

The golf players will also have a shot at some prizes (pun intended):

- Best poker hand – a card will be given to each foursome at the completion of each hole. Pick your best five cards and the best poker hand from the competing teams will win. Don't like your poker hand? Each foursome may donate \$5 to the scholarship fund for a new card at the end (maximum 4 new cards or \$20)
- Most hole-in-ones: the player with the most hole-in-ones will win a prize. If there is a tie, a one-hole shoot off will occur to determine the winner.
- Best score: the foursome with the best (lowest) combined score wins a prize.
- Strategy hole: one of the holes will give you an option for a quick pay-off! But will that come at a price? More information on this hole will be provided at the event.

Schedule:

- 5:30 to 6:30 – Happy hour
- 6:00 to 6:30 – Construction: Enjoy your favorite beverage while constructing your golf hole (or watching others).
- 6:30 to 7:45 – Dinner and silent auction raffle
- 7:45 to 9:00 – Mini golf tournament and voting
- 9:00 – Presentation of awards



Friday, May 6th

Arizona Floodplain Management Association Spring 2016 Conference

7:00 to 8:00	Board of Directors Meeting in the Ponderosa Board room
7:00 to 8:30	Breakfast at the High Country Conference Center
8:30 to 9:00	Initial Engineering Assessment: An Objective Approach to Hazard Mitigation Planning, Aric Stewart, P.E., CFM, Coconino County, Christopher Dusza, P.E., CFM, Civiltec Engineering, Inc., Scott Ogden, P.E., CFM, J.E. Fuller Hydrology & Geomorphology
9:00 to 9:30	Managing Federal Grants under 2 CFR 200, Robert Bezek, CFM, PMP, FEMA Region IX
9:30 to 10:00	State Land 101: A Primer on Arizona's State Trust Lands Mark Edelman, AICP, Arizona State Land Department
10:00 to 10:30	<i>Break & Checkout of Hotel</i>
10:30 to 11:00	Selection of the Time-Distribution for Local Storm PMP and its Effect on Prediction of Basin Runoff, Michael Johnson, P.E., PhD, WEST Consultants, Inc.
11:00 to 11:30	The Role of Electrodialysis in Water Treatment Norma Villagomez-Marquez, AFMA Scholarship Recipient
11:30 to 12:00	Pick-up Box Lunch
12:00 to 2:00	Field Trip – Schultz Fire and Flood Mitigation Project Tour

Field Trip: (2 CECs)

Schultz Fire and Flood Mitigation Project Tour
Chris Dusza P.E., CFM, Civiltec Engineering
Allen Hayden, Natural Channel Design

The catastrophic Schultz Fire burned over 15,000 acres in 2010, just prior to the 4th wettest monsoon on record in Flagstaff.

This field trip will be a tour of flood mitigation projects associated with the Schultz Fire that span the past 6 years. The tour will travel north along Forest Road 420 where various aspects of the forest mitigation can be seen as well as rainfall gauges that are part of the ALERT network. We will then travel south along Highway 89 through several neighborhoods to see projects including Wupatki/Lennox, Upper Campbell, South Paintbrush and North Paintbrush. This will provide a timeframe contrast from projects done in 2013, 2014, and 2015.

This field trip will be accessed through unpaved forest service roads and require a high profile vehicle and walking shoes.

-Photographs courtesy of Chris Dusza

